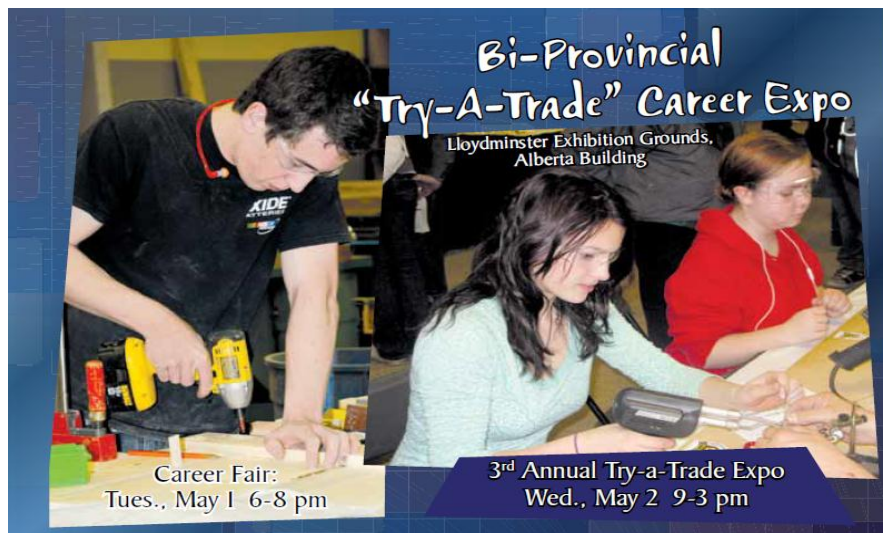


# 2012 Bi-Provincial Try-A-Trade Career Expo

# Sponsorship Package





### EXHIBIT RATES AND OPTIONS

Interactive “Try-A-Trade” booths

Sizes are as follows:

10’ x 10’ or 10’ x 20’

Other sizes will be allowed for an interactive, try-a-trade display.

Sizes are as follows for informational/service booths (non-interactive):

10’ x 10’ - \$200

10’ x 20’ - \$300

Non-Profit or “Hands on display booths”

Price - 10’x10’ - \$100

10’x20’ - \$200

10’x30’ - \$300

Includes:

- Free advertising for your company
- Free luncheon and refreshments
- Free parking
- And more!

### HOW TO BOOK A BOOTH

Simply fill in the attached form and mail or fax it back to us. Book now, you won’t want to miss this opportunity!

Further sponsorship information and details are available. Please contact us with any questions.

# Fact Sheet

### Date

Tuesday, May 1<sup>st</sup> and Wednesday, May 2<sup>nd</sup>

### Hours

Tuesday Career Fair – 6 to 8 pm

Wednesday Try-A-Trade Expo – 9 am to 3 pm

### Location

Lloydminster Exhibition Grounds - AB Bldg.

5521 – 49<sup>th</sup> Avenue

Lloydminster, SK

### Move-In

Monday, April 30      Noon to 8 pm

Tuesday, May 1<sup>st</sup>      8 am to 6 pm

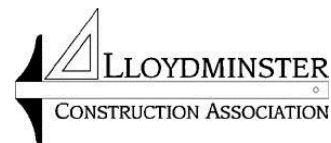
Wednesday, May 2<sup>nd</sup> 7:30 am to 8:45 am

### Move-Out

Wednesday, May 2<sup>nd</sup>,    3 to 7 pm

### Why attend?

By participating in the Bi-Provincial Try-A-Trade Expo, you are helping to enrich 1800 Lloydminster and surrounding area’s youth with information about the your trade. Help to shape the future of the trades in SK and AB with the Try-A-Trade Expo!



Lloydminster Construction Association

4419 52<sup>nd</sup> Avenue

Lloydminster, AB/SK

T9V 0Y8

Phone: 780-875-8875

Fax: 780-875-8874

Website: [www.lloydconstruction.ca](http://www.lloydconstruction.ca)

E-mail: [lloydca@telusplanet.net](mailto:lloydca@telusplanet.net)

**Thank you to our following Platinum sponsors!**



# The Benefits of Sponsoring the Bi-Provincial “Try-A-Trade” Career Expo

## Reasons to Sponsor

Sponsorship at the Bi-Provincial “Try-A-Trade” Career Expo delivers increased exposure of your company or organization to a target market of students ages 15+ and the general public interested in the trades. You also have the chance to help shape our youth’s future as there is an anticipated demand for over 38,000 workers by 2017, due to retirements and job growth. Our 2011 Expo had 115 booths and over 1800 students, so help make this year bigger and better!

## Advantages of Sponsoring

- Opportunity to reach your target market or primary audience
- Face-to-face exposure with other professionals in the trades
- Successful lead generation and prospecting for new business or employees
- Great media relations for your business or organization
- Market presence and awareness
- Opportunity to inform patrons about your organization, products or services

Listed below are our three sponsorship levels; gold, silver and bronze. Any level can be sponsored in-kind or through monetary sponsorships. If you have any questions, please feel free to contact Dorothy Carson or Jennifer Sidoryk at (780) 875-8875 or by email at [lloydca@telusplanet.net](mailto:lloydca@telusplanet.net).

## Sponsorship Levels

### Gold Sponsor

**\$2000**

As a Gold Sponsor, you will receive recognition on our:

- (2) 10 x 10 tables
- Website, [www.lloydconstruction.ca](http://www.lloydconstruction.ca)
- Weekly newsletter
- Poster
- Any advertising (radio, newspaper)
- All promotional materials
- Exhibitor’s Package

### Silver Sponsor

**\$1000**

As a Silver Sponsor, you will receive recognition on our:

- (2) 10 x 10 tables
- Website, [www.lloydconstruction.ca](http://www.lloydconstruction.ca)
- Weekly newsletter
- Newspaper ads
- Exhibitor’s Package

### Bronze Sponsor

**\$500**

As a Bronze Sponsor, you will receive recognition on our:

- (1) 10 x 10 tables
- Website, [www.lloydconstruction.ca](http://www.lloydconstruction.ca)
- Weekly newsletter
- Exhibitor’s Package





Registration Form  
Tuesday, May 1st & Wednesday, May 2nd  
Lloydminster Exhibition Grounds – 6 to 8 pm & 9 am to 3 pm

Company: \_\_\_\_\_

Contact Person: \_\_\_\_\_

Phone: \_\_\_\_\_ Email: \_\_\_\_\_

Yes, we will be an EXPO Sponsor!

- Gold \$2000.00
- Silver \$1000.00
- Bronze \$500.00

Other \$ \_\_\_\_\_ or Gift Donation \_\_\_\_\_ Please invoice \_\_\_\_\_

Yes, we will be an EXPO Exhibitor Only!

*Please circle one*

Hands On or Non-Profit Organization Booths

- 10' x 10' - \$100

- 10' x 20' - \$200

Non-Interactive Booths

10' x 10' - \$200

10' x 20' - \$300

If Available:

Representatives Attending Expo: \_\_\_\_\_

Special Booth Requirements: \_\_\_\_\_

**Exhibitor's Information Package to follow**

**All booths include:**

- 8' High or 4' High Back wall Drapery
- 4' High Sidewall Drapery
- 1- 8' Skirted Table
- 2- Folding Chairs
- 1- 800 Watt Electrical Outlet
- 2- 150 Watt Floodlights

**Refreshments served include:**

- Coffee break** (coffee, juice, and muffins or cookies)-both days
- Soup & Sandwich** (assorted cold cuts and sandwich toppings, cold pickle bar, beverages and dessert) -Wednesday Only

Please do not hesitate to contact Dorothy Carson at the Lloydminster Construction Association if you have any questions. **Phone: 780-875-8875 Fax: 780-875-8874 or Email: lloydca@telusplanet.net.**

