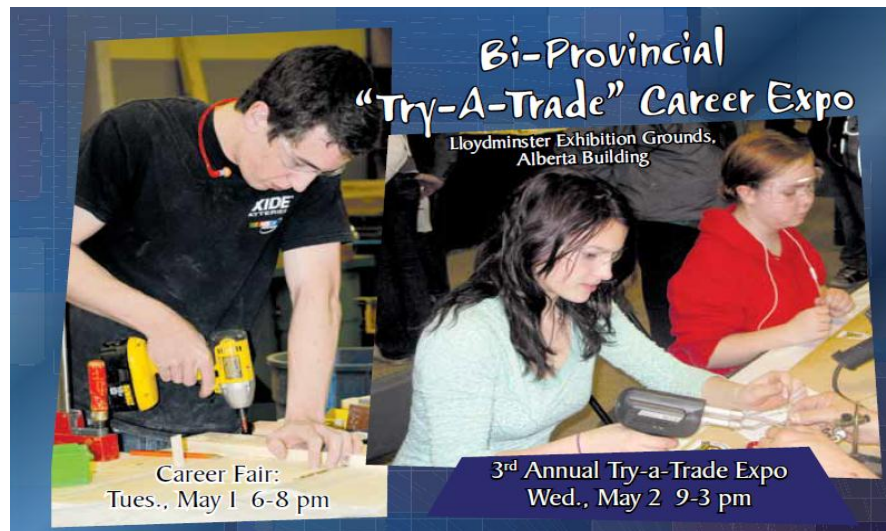


# 2012 Bi-Provincial Try-A-Trade Career Expo

# Exhibitor Registration



# Fact Sheet



## EXHIBIT RATES AND OPTIONS

Interactive "Try-A-Trade" booths

Sizes are as follows:

10' x 10'

Multiples of booths will be available

Non-Profit or "Hands on display booths"

Price - 10'x10' - \$100

10'x20' - \$200

10'x30' - \$300

Sizes are as follows for  
informational/service booths  
(Non-interactive):

Price - 10' x 10' - \$200

10' x 20' - \$300

Includes:

- Free advertising for your company
- Free luncheon and refreshments
- Free parking
- And more!

## HOW TO BOOK A BOOTH

Simply fill in the attached form and mail or fax it back to us. Book now, you won't want to miss this opportunity!

## Date

Tuesday, May 1<sup>st</sup>, 2011

Wednesday, May 2<sup>nd</sup>, 2011

## Hours

6pm to 8 pm – Tuesday – Career Fair

9am to 3 pm – Wednesday – Try A Trade

## Location

Lloydminster Exhibition Grounds

5521 – 49<sup>th</sup> Avenue

Lloydminster, SK

## Move-In

Tuesday, May 1 8 a.m. to 5 p.m.

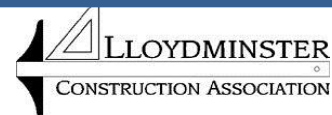
Wednesday, May 2 7 a.m. to 8:30 a.m.

## Move-Out

Wednesday, May 2 3 p.m. to 9 p.m.

## Why attend?

By participating in the Bi-Provincial Try-A-Trade Expo, you are helping to enrich the Lloydminster and surrounding area's youth with information about the 51 designated trades. Help to shape the future of the trades in Saskatchewan and Alberta with the Try-A-Trade Expo!



Lloydminster Construction Association

4419 52<sup>nd</sup> Avenue

Lloydminster, AB/SK

T9V 0Y8

Phone: 780-875-8875

Fax: 780-875-8874

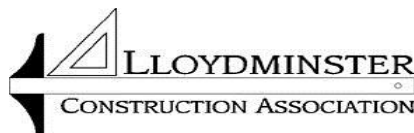
Website: [www.lloydconstruction.ca](http://www.lloydconstruction.ca)

E-mail: [lloydca@telusplanet.net](mailto:lloydca@telusplanet.net)

Thank you to our following Platinum Sponsors!



Saskatchewan  
Apprenticeship and  
Trade Certification  
Commission



Apprenticeship and  
Industry Training



Government  
of Alberta



4419- 52 Avenue  
Lloydminster, AB/SK T9X 0Y8  
Phone: 780-875-8875  
Fax: 780-875-8874  
E-mail: lloydca@telusplanet.net

### Exhibitor’s Participation Requirement

Please complete the following form and mail, fax or e-mail it to the  
Lloydminster Construction  
Association ASAP  
(NO LATER THAN April 20, 2012)  
780-875-8874 fax  
[lloydca@telusplanet.net](mailto:lloydca@telusplanet.net)

## Bi-Provincial “Try-A-Trade” Career Expo

Company: \_\_\_\_\_

Contact Person: \_\_\_\_\_

Company Address: \_\_\_\_\_

Phone: \_\_\_\_\_ Email: \_\_\_\_\_

Size of Booth: 10 x 10  10 x 20  10 x 30  Other: \_\_\_\_\_ Outside

Invoice:  Payment Enclosed:

Representative(s) Attending Expo:  
\_\_\_\_\_  
\_\_\_\_\_

Food Allergies/Special Dietary Requirements (Vegetarian, Vegan, etc.):  
\_\_\_\_\_  
\_\_\_\_\_

- 1- 10x 10 booth include:  
8’ High or 4’ High Backwall Drapery  
4’ High Sidewall Drapery  
1 – 8’ Skirted Table  
2 – Folding Chairs  
1 – 800 Watt Electrical Outlet  
2 – 150 Watt Floodlights

- Refreshments served include:  
- Coffee break (coffee, juice, and muffins or cookies) - both days  
- Soup & Sandwiches (assorted cold cuts and sandwich toppings, cold pickle bar, beverages and dessert) – Wednesday Only

Special Booth Requirements (electrical, audio/visual, etc.):  
\_\_\_\_\_  
\_\_\_\_\_

Expected Move-In Date:

\* We strongly encourage set-up to take place on Tuesday, May 1st. There will be security on the premises overnight to help prevent any possible theft or losses.

Tuesday, May 1<sup>st</sup> 8 a.m. to 5 p.m.

Wednesday, May 2<sup>nd</sup> 7 a.m. to 8:30 a.m.

Dear Exhibitor:

Welcome and thank you for choosing to be a participant at the  
**3rd Annual Bi-Provincial "Try-A-Trade" Career Expo!**

Please take a moment to read the exhibitor manual, which will provide you with all the necessary information to help make your participation in the show more profitable and enjoyable.

The focus of this event is to promote careers in the trades in which today's youth, parents and job-seekers will be able to explore a wide range of options for a career in an industry that employs 1.3 million Canadians. It will also give your company a unique opportunity to promote your industry and to provide information for today's youth.

As being a part of the Bi-Provincial "Try-A-Trade" Career Expo, you are helping to broaden patron's minds on the endless opportunities they are presented with today. Thanks to you, a person who visits your display may go on to become a tradesperson in any of the 7 industries.

Local School Division will be sending up to 2000 students from Grade 9 thru 12.  
Participating School Divisions taking part in our 2012 Expo are:

**LLOYDMINSTER CATHOLIC SCHOOL DIVISION  
LLOYDMINSTER PUBLIC SCHOOL DIVISION  
BUFFALO TRAIL PUBLIC SCHOOL  
NORTHWEST SCHOOL DIVISION  
EAST CENTRAL ALBERTA CATHOLIC SCHOOL DIVISION  
LIVING SKIES SCHOOL DIVISION**

Thank you once again for helping change the future of the trades.

On behalf of the 2012  
Try A Trade Career Expo Committee  
Dorothy Carson  
Lloydminster Construction Association

## General Information

### Show Day and Hours

Tuesday, May 1<sup>st</sup>, 2011 – Career Fair  
6 p.m. to 8 p.m.

Wednesday, May 2<sup>nd</sup>, 2011- Try a Trade  
9 a.m. to 3 p.m.

### Show Location

Lloydminster Exhibition Grounds  
Alberta Building – Dick Jones Sales Pavilion  
Outside space available

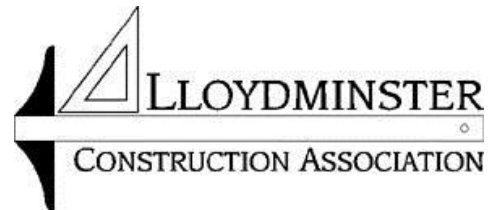
5521 49<sup>th</sup> Avenue  
Lloydminster, SK  
S9V 0Y7  
Phone: 306-825-5571  
Website: lloydexh.com



**Lloydminster  
Agricultural  
Exhibition  
Association**

### Produced By

Lloydminster Construction Association  
4419 52<sup>nd</sup> Avenue  
Lloydminster, AB/SK  
T9V 0Y8  
Phone: 780-875-8875  
Fax: 780-875-8874  
Website: [www.lloydconstruction.ca](http://www.lloydconstruction.ca)  
E-mail: [lloydca@telusplanet.net](mailto:lloydca@telusplanet.net)



### Dates to Remember

April 20 <sup>th</sup> , 2011	Exhibitor Registration Information Sheet due
May 1st, 2011	Early Move-In Day – Career Fair – Grade 11/12 students – resumes/trade info
May 2nd, 2011	Day of the Bi-Provincial “Try-A-Trade” Expo – 2000 Grade 9 to 12 students

All events are open to the General Public

**Bi-Provincial  
“Try-A-Trade”  
Career Expo**

## Move-In Times

Tuesday, May 1<sup>st</sup>, 8 a.m. to 5 p.m.

Wednesday, May 2<sup>nd</sup>, 7 a.m. to 8:30 a.m.

We ask that all exhibitors have their booths set-up before 8:30 a.m. to help the process run smoothly, and to help us serve you better. There will be security from 5 p.m. to 7 a.m. Exhibitors will not be permitted to set up during show hours.

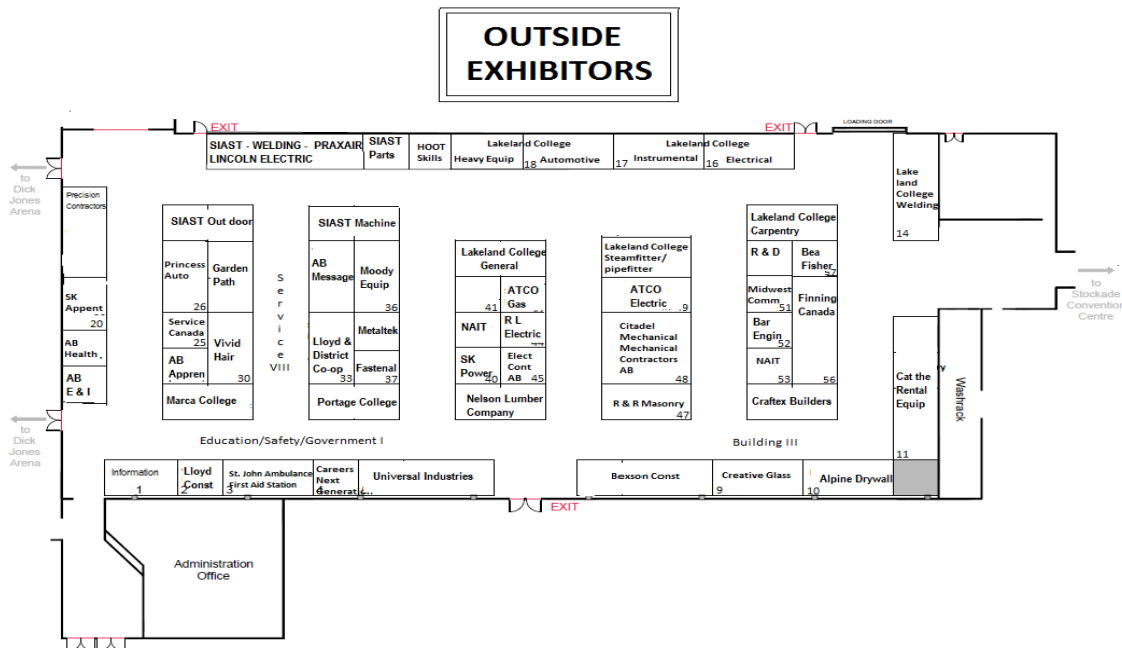
## Move-Out Times

Wednesday, May 2<sup>nd</sup> 3:00 p.m. to 9:00 p.m.

We ask that no exhibitor begins take-down until 3:00 p.m. to allow all trade show patrons to leave the facility.

## Special Requirements

If you have any special requirements, please specify your requirements on the registration sheet so arrangements can be made. Special requirements may be as follows: electrical requirements, placement in a well-ventilated area, etc.



**\*2011 Floor plan is subject to change for 2012\***

**Moody's Equipment & Platinum Energy outside**

## Rules, Regulations and Important Information

**Submitting your application certifies that you have read and agree to the terms of this notice and of this section specifically.**

**Alcohol/Illegal Narcotics:** The consumption of alcoholic beverages or illegal narcotics is PROHIBITED. Any persons found to be consuming or in the possession of alcoholic beverages will be asked to dump their alcohol, and if found again, will be escorted from the premises. Anyone found to be consuming or in the possession of illegal narcotics will be immediately escorted from the premises. Also, anyone seeming to be under the influence of alcohol or narcotics will be immediately escorted from the premises.

**Booth Etiquette:** Please refrain from using your cellular phone while at your booth if possible.

**Cancellation Policy:** If you cannot attend the Bi-Provincial “Try-A-Trade” Career Expo, please let an event manager know as soon as possible, preferably BEFORE April 20, 2012

**Exclusion of Liability and Assumption of Risk and Jurisdiction:** The Lloydminster Construction Association, the Lloydminster Agricultural Exhibition Association, and any owners, employees, stakeholders or affiliates will NOT be held liable for any loss, damage, theft, injury, or death occurred during the Bi-Provincial “Try-A-Trade” Career Expo, from May 1st to May 2<sup>nd</sup>, 2012.

**Exhibitor Identification Tags:** Your exhibitor tag must be worn at all times. If it is not worn, you will be denied access into the hospitality room. All exhibitor tags will be issued the night of the Career Fair (May 1<sup>st</sup>, 2012)

**Fire Regulations:** All booths must be in compliance with the Saskatchewan Fire Code Regulations and the Alberta Fire Code Regulations. We therefore retain the right to refuse any material, object or practice that does not confirm to code. Please refer to <http://www.municipalaffairs.gov.ab.ca/> or <http://www.qp.gov.sk.ca/documents/English/Regulations/Regulations/F15-001R1.pdf> for more details.

**Food and Beverage:** Please do not bring any outside refreshments as all REGISTERED exhibitors will receive a free lunch and refreshments throughout the day in our hospitality room. Please make sure to note any food allergies or special dietary requirements on the exhibitor registration form to help us better accommodate your needs.

**Give-a-ways:** All exhibitors are encouraged to provide give-a-ways at their table if their display is not a “try-a-trade” display or find a way to engage the patrons to the best of the company’s ability.

**Smoking:** There is NO smoking inside the Lloydminster Exhibition Grounds. Smoking is permitted ONLY in the designated areas.

# The Benefits of Sponsoring the Bi-Provincial "Try-A-Trade" Career Expo

## Reasons to Sponsor

Sponsorship at the Bi-Provincial "Try-A-Trade" Career Expo delivers increased exposure of your company or organization to a target market of students ages 15+ and the general public interested in the trades. You also have the chance to help shape our youth's future as there is an anticipated demand for over 38,000 workers by 2017, due to retirements and job growth. We advertise our event and sponsor all year round.

## Advantages of Sponsoring

- Opportunity to reach your target market or primary audience
- Face-to-face exposure with other professionals in the trades
- Successful lead generation and prospecting for new business or employees
- Great media relations for your business or organization
- Market presence and awareness
- Opportunity to inform patrons about your organization, products or services

Listed below are our three sponsorship levels; gold, silver and bronze. Any level can be sponsored in-kind or through monetary sponsorships. If you have any questions, please feel free to contact Dorothy Carson at (780) 875-8875 or by email at [lloydca@telusplanet.net](mailto:lloydca@telusplanet.net).

## Sponsorship Levels

### Gold Sponsor

**\$2000**

As a Gold Sponsor, you will receive recognition on our:

- Website, [www.lloydconstruction.ca](http://www.lloydconstruction.ca)
- 2 – 10 x 10 booths
- Weekly newsletter
- Poster/postcard
- PowerPoint
- Any advertising (radio, newspaper)
- All promotional materials

### Silver Sponsor

**\$1000**

As a Silver Sponsor, you will receive recognition on our:

- Website, [www.lloydconstruction.ca](http://www.lloydconstruction.ca)
- 2 – 10 x 10 booths
- Weekly newsletter
- Newspaper ads
- PowerPoint

### Bronze Sponsor

**\$500**

As a Bronze Sponsor, you will receive recognition on our:

- Website, [www.lloydconstruction.ca](http://www.lloydconstruction.ca)
- 1 – 10 x 10 booth
- Weekly newsletter

**Company:** \_\_\_\_\_

**Contact Person:** \_\_\_\_\_

**Phone:** \_\_\_\_\_ **Email:** \_\_\_\_\_

**Yes, we will be an EXPO Sponsor!**

Gold \$2000.00

Silver \$1000.00

Bronze \$500.00

Other \$ \_\_\_\_\_ or Gift Donation \_\_\_\_\_ Please invoice \_\_\_\_\_